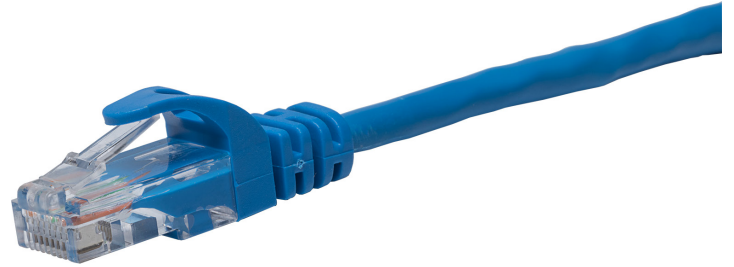




CONTRACTOR	
PROJECT	DATE
PREPARED BY	MODEL :

SERIES SPECIFICATIONS

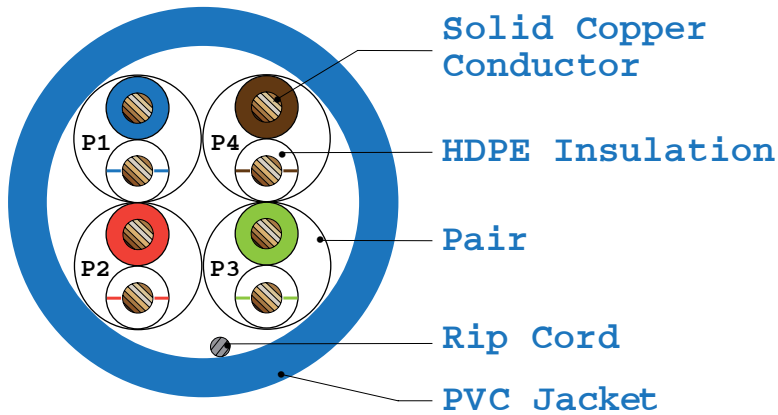
CAT5E PATCH CORDS



RoHS
COMPLIANT



LINE DRAWING



PAIR	COLOR CODING
P1	BLUE-WHITE/BLUE
P2	ORANGE-WHITE/ORANGE
P3	GREEN- WHITE/GREEN
P4	BROWN- WHITE/BROWN

Color hues may vary slightly from those pictured.

CONSTRUCTION

Conductor Material
Solid-Bare Copper

Conductor O.D.
0.500 ±0.005mm

Insulation Material
HDPE

Insulation Diameter
0.88 ±0.03mm

Sheath Material
PVC

Sheath Thickness
0.50 ±0.05mm

External O.D.
5.0 ±0.4mm

Cable Construction
24AWG U/UTPx4P

Ripcord
Nylon

APPLICATION AND PERFORMANCE SPECIFICATION INFORMATION IS SUBJECT TO CHANGE WITHOUT NOTIFICATION



404 NW ENTERPRISE DR. PORT ST. LUCIE, FL 34986 | 772.408.5213 | WWW.RPP-USA.COM



CONTRACTOR	
PROJECT	DATE
PREPARED BY	MODEL :

ELECTRICAL SPECIFICATIONS

1.0-100.0MHz Impedance(Ω)
100 \pm 15

**1.0-100.0MHz Delay Shew
(ns/100m)**
 \leq 45

**DC Conductor Resistance
Unbalance(%) max**
5.0

Capacitance(nF/100m) max
5.6

DC Resistance Ω /100m) max
9.5

NVP
69%

Temp. Rating
-40°C ~ 75°C

Voltage Rating
300V

1.0-350.0MHz Impedance(Ω)
100 \pm 15

CERTIFICATIONS/WARRANTY

Listing

c-UL-us Listed

RoHS

RoHS compliant

Warranty

Guaranteed for one year from the purchase date of the product, against mechanical defects in manufacturing.

ORDERING INFORMATION

Part Code	IMS Code	Color	Length
PC5EBL01SL	0393-1320	Blue	1 Ft.
PC5EBL03SL	0393-1323	Blue	3 Ft.
PC5EBL05SL	0393-1326	Blue	5 Ft.
PC5EBL07SL	0393-1329	Blue	7 Ft.
PC5EBL15SL	0393-1332	Blue	15 Ft.
PC5EBL25SL	0393-1338	Blue	25 Ft.

APPLICATION AND PERFORMANCE SPECIFICATION INFORMATION IS SUBJECT TO CHANGE WITHOUT NOTIFICATION



404 NW ENTERPRISE DR. PORT ST. LUCIE, FL 34986 | 772.408.5213 | WWW.RPP-USA.COM