

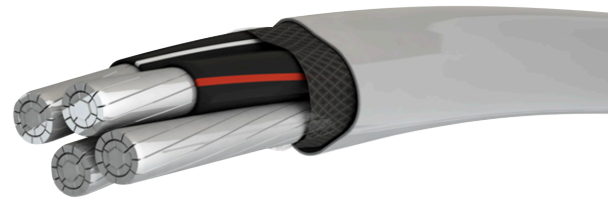


CONTRACTOR:	
PROJECT:	DATE:
PREPARED BY:	MODEL: SER

SPECIFICATION & FEATURES

Service Entrance Cable is used to convey power from the service drop to the meter base and from the meter base to the distribution panel board. It can be used for both above ground service entrance and interior wiring applications at temperatures not to exceed 90°C.

- Cable is constructed with AA-8000 series aluminum alloy, compact stranded conductors.
- Cross-linked polyethylene insulation rated for maximum operation temperature of 90°C in wet and dry locations.
- Eco friendly sunlight resistant, flame retardant and heavy metal free Polyvinyl Chloride (PVC) Jacket.
- Insulation and Jacket materials are in compliance with RoHS, Directive 2002/95/EC.



CERTIFICATIONS/WARRANTY

Listing: UL 44, UL 854 ASTM B 800, ASTM B 801, FEDERAL SPECIFICATION A-A-59544 , NATIONAL ELECTRICAL CODE/NFPA 70 OHS

Warranty

Guaranteed for one year from the purchase date of the product, against mechanical defects in manufacturing.

CONSTRUCTION

Max. Rating
600V

Conductors
AA-8000 series aluminum alloy

Flame Retardant
UV & flame resistant PVC jacket

APPLICATION AND PERFORMANCE SPECIFICATION INFORMATION IS SUBJECT TO CHANGE WITHOUT NOTIFICATION



11675 SW TOM MACKIE BLVD. | PORT ST. LUCIE, FL 34987 | P: 772.408.5211 | WWW.CENTAURINSTALLATION.COM



CONTRACTOR:	
PROJECT:	DATE:
PREPARED BY:	MODEL: SER

ORDERING INFORMATION

Part Code	IMS Code
SER-4/0-4/0-4/0-2/0-AL-500	0576-4323
SER-6-6-6-6-AL-500	0576-4335
SER-2-2-2-4-AL-500	0576-4326
SER-2/0-2/0-2/0-1-AL-500	0576-4329
SER-1/0-1/0-1/0-2-AL-500	0576-4338
SER-1-1-1-3-AL-500	0576-4341
SER-4-4-4-6-AL-500	0576-4344
SER-8-8-8-8-AL-500	0576-4347
SER-6-6-6-AL-500	0576-4356
SER-3/0-3/0-3/0-1/0-AL-500	0576-4353
SER-2-2-2-2-4-AL-500	0576-4365
SER-250/250/250-3/0-AL-500	0576-4350
SER-4/0-4/0-4/0-4/0-2/0-AL-500	0576-4377

APPLICATION AND PERFORMANCE SPECIFICATION INFORMATION IS SUBJECT TO CHANGE WITHOUT NOTIFICATION





CONTRACTOR:	
PROJECT:	DATE:
PREPARED BY:	MODEL: SER

AA8000 SE CABLE TYPE R (SER) SPECIFICATION

Inch-pound Unit

Code	Size	Phase Conductor			Insulation Thickness		Ground Conductor			Sheath			Weight of Cable lb/kft	R of cable @20°C	
		Size	Diam	Wires	Mon	Min	Size	Diam	Wires	Thickness		Diameter		Phase	Ground
		AWG					AWG			non	min	approx.		Cond.	Cond.
		/MCM	mils	No.	mils	mils	/MCM	mils	No.	mils	mils	inch	lb/kft	ohms/kft	ohms/kft
SER Two phase + one ground, "three cores"															
2	6-6-6	6	169	7	45	40	6	169	7	0.03	0.027	0.58	142	0.6873	0.6873

Code	Size	Phase Conductor			Insulation Thickness		Ground Conductor			Sheath			Weight of Cable lb/kft	R of cable @20°C	
		Size	Diam	Wires	Mon	Min	Size	Diam	Wires	Thickness		Diameter		Phase	Ground
		AWG					AWG			non	min	approx.		Cond.	Cond.
		/MCM	mils	No.	mils	mils	/MCM	mils	No.	mils	mils	inch	lb/kft	ohms/kft	ohms/kft
SER Three phase + one ground, "Four cores"															
1	8-8-8-8	8	134	7	45	40	8	213	7	0.03	0.027	0.57	134	1.0924	1.0924
2	6-6-6-6	6	169	7	45	40	6	169	7	0.03	0.027	0.66	184	0.6873	0.6873
3	4-4-4-6	4	213	7	45	40	6	169	7	0.03	0.027	0.74	244	0.4321	0.6873
4	2-2-2-4	2	268	7	45	40	4	134	7	0.03	0.027	0.87	348	0.2718	0.4321
5	1-1-1-3	1	299	18	55	50	3	134	7	0.035	0.032	0.99	446	0.2155	0.3428
6	1/0-1/0-1/0-2	1/0	336	18	55	50	2	134	7	0.035	0.032	1.07	536	0.1708	0.2718
7	2/0-2/0-2/0-1	2/0	376	19	55	50	1	134	18	0.035	0.032	1.19	656	0.1355	0.2155
8	3/0-3/0-3/0-1/0	3/0	423	19	55	50	1/0	134	18	0.035	0.032	1.29	794	0.1074	0.1708
9	4/0-4/0-4/0-2/0	4/0	475	19	55	50	2/0	134	19	0.04	0.036	1.42	978	0.0853	0.1355
10	250-250-250-3/0	250	520	36	65	58	3/0	134	19	0.045	0.041	1.57	1186	0.0722	0.1074

Code	Size	Phase Conductor			Insulation Thickness		Ground Conductor			Sheath			Weight of Cable lb/kft	R of cable @20°C	
		Size	Diam	Wires	Mon	Min	Size	Diam	Wires	Thickness		Diameter		Phase	Ground
		AWG					AWG			non	min	approx.		Cond.	Cond.
		/MCM	mils	No.	mils	mils	/MCM	mils	No.	mils	mils	inch	lb/kft	ohms/kft	ohms/kft
SER Four phase+ one ground, "Five cores"															
4	2-2-2-2-4	2	268	7	45	40	4	134	7	0.035	0.032	1	446	0.2718	0.4321
9	4/0-4/0-4/0-4/0-2/0	4/0	475	19	55	50	2/0	134	19	0.045	0.041	1.61	1248	0.0853	0.1355

APPLICATION AND PERFORMANCE SPECIFICATION INFORMATION IS SUBJECT TO CHANGE WITHOUT NOTIFICATION

